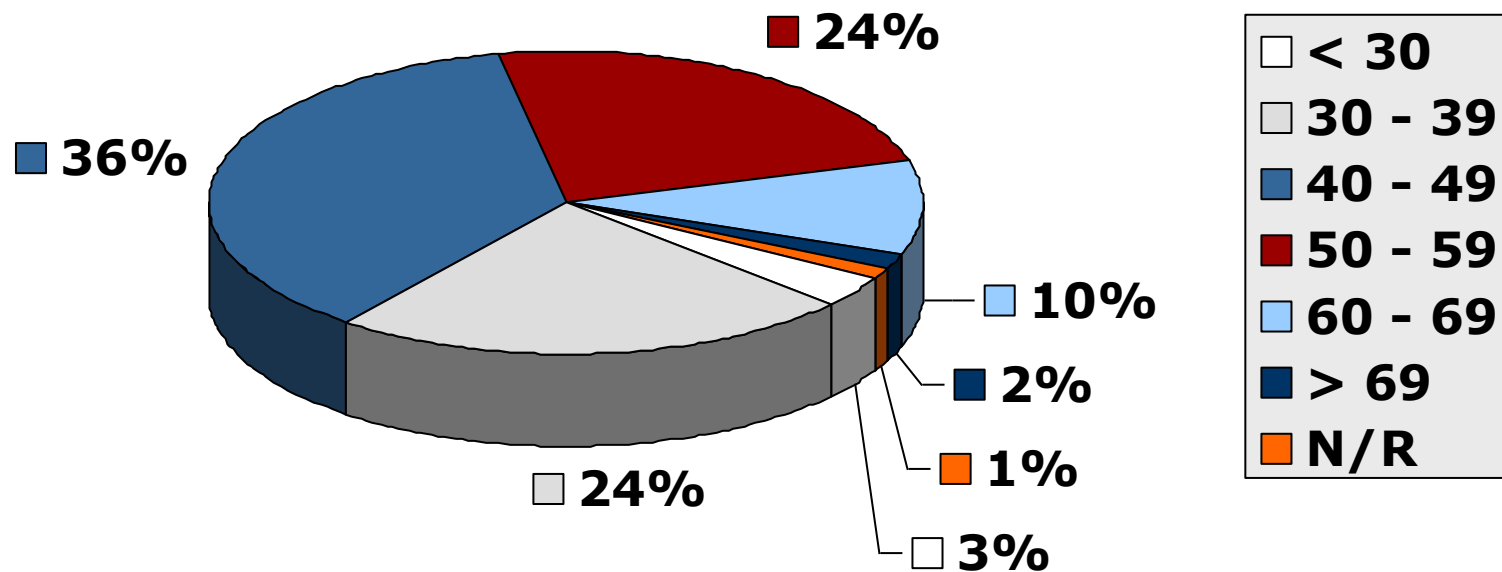
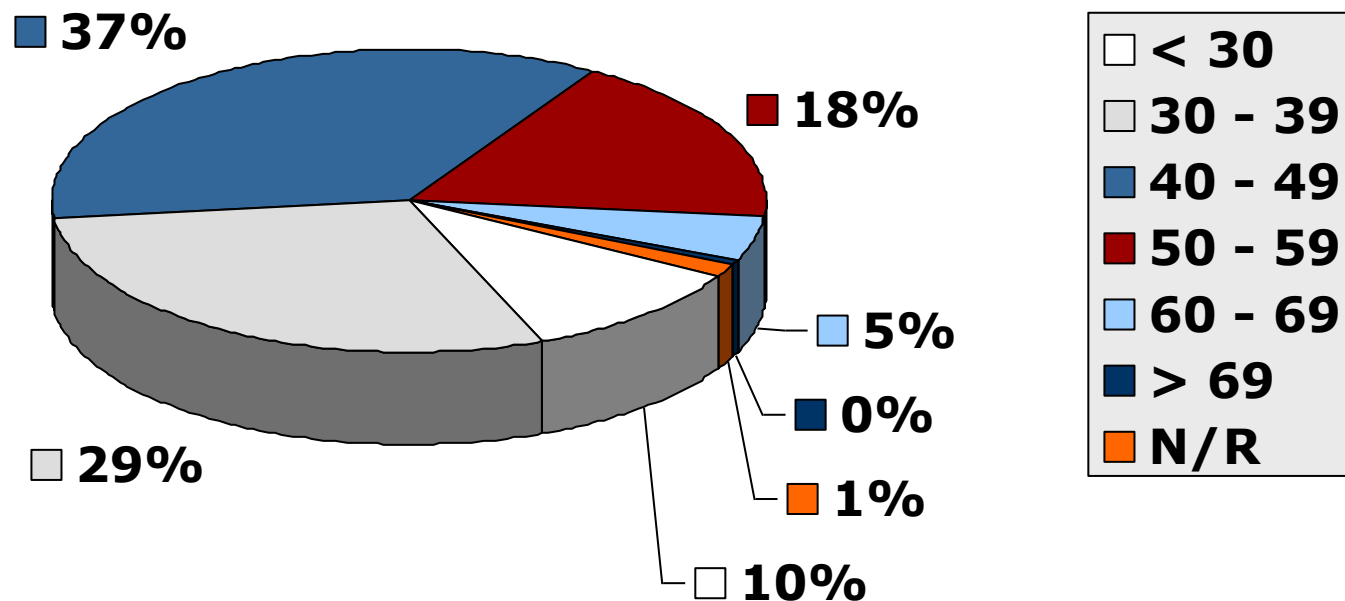


# Age Distribution: Registered Nurses/Midwives



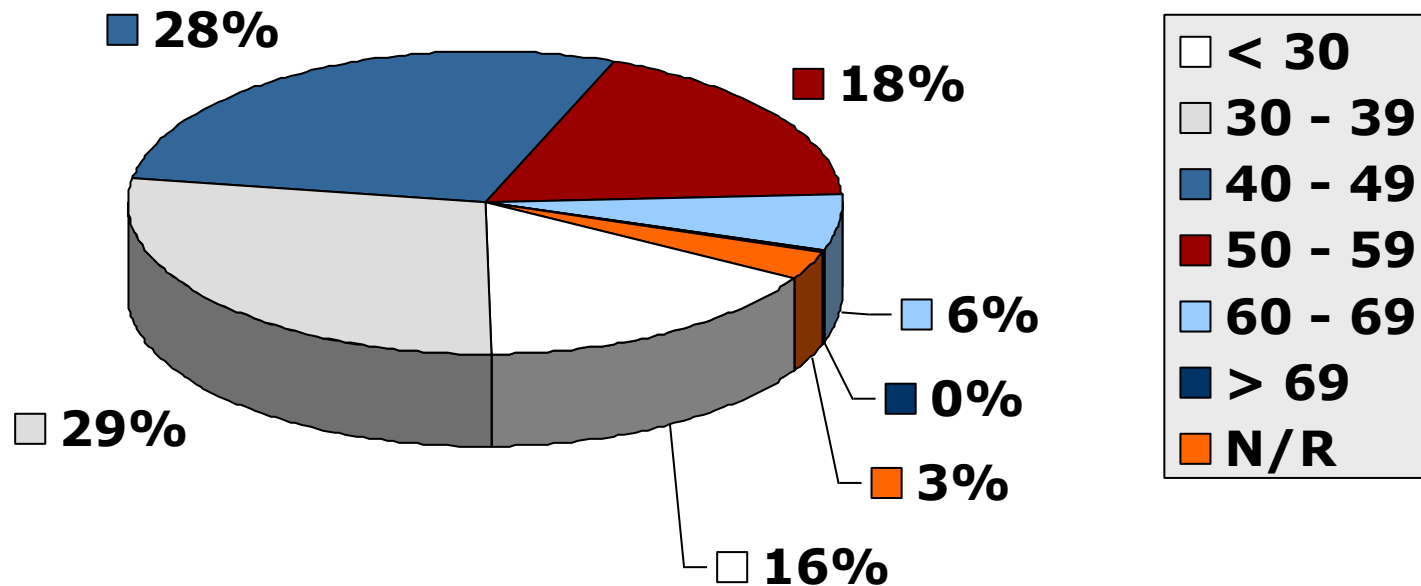
**As at 2005-12-31**

# Age Distribution: Enrolled Nurses/Midwives



**As at 2005-12-31**

# Age Distribution: Enrolled Nursing Auxiliaries



**As at 2005-12-31**

# Age Distribution (table):

## All Nurses (as at 2005-12-31)

<b>Age Group</b>	<b>RN / RM</b>	<b>EN / EM</b>	<b>ENA</b>
< 25	59	668	2035
25 – 29	3249	3225	6879
30 – 34	10034	4644	7514
35 – 39	14071	6186	7743
40 – 44	17678	6991	7821
45 – 49	18517	6222	7700
50 -54	13874	4365	5790
55 – 59	9866	2338	4218
60 – 64	6739	1267	2280
65 - 69	3454	523	803
> 69	1591	147	173
Not Reported	1072	546	1708
<b>TOTAL</b>	<b>100204</b>	<b>37122</b>	<b>54664</b>

# Age Analysis: Students/Pupils

(Who commenced for the first time in 2005)

<b>Course Name</b>	<b>Average Age</b>	<b>Minimum Age</b>	<b>Maximum Age</b>	<b>Count (persons)</b>
4-year N+M	27	17	56	2859
Bridging (Gen.)	37	20	60	1906
Psychiatric N	44	35	56	47
Midwifery	42	28	61	721
Enrolled (Gen.)	29	17	62	5356
Enrolled (Comm.)	39	20	62	50
Enrolled (Psy.)	43	32	52	18
Nursing Auxiliary	28	17	63	6246
CHTC (Primary Health)	40	26	57	173
<b>OVERALL</b>	<b>30</b>	<b>17</b>	<b>63</b>	<b>17376</b>

# Age Analysis: Students/Pupils (Who completed training in 2005)

<b>Course Name</b>	<b>Average Age</b>	<b>Minimum Age</b>	<b>Maximum Age</b>	<b>Count (persons)</b>
4-year N+M	29	21	56	1533
Bridging (Gen.)	40	23	67	2341
Psychiatric N	43	33	52	48
Midwifery	43	26	65	1134
Enrolled (Gen.)	32	19	65	4519
Enrolled (Comm.)	45	31	57	33
Enrolled (Psy.)	47	33	59	5
Nursing Auxiliary	29	18	62	6749
CHTC (Primary Health)	41	28	61	135
Community N/Sc.	45	40	52	5
<b>OVERALL</b>	<b>32</b>	<b>18</b>	<b>67</b>	<b>16502</b>