

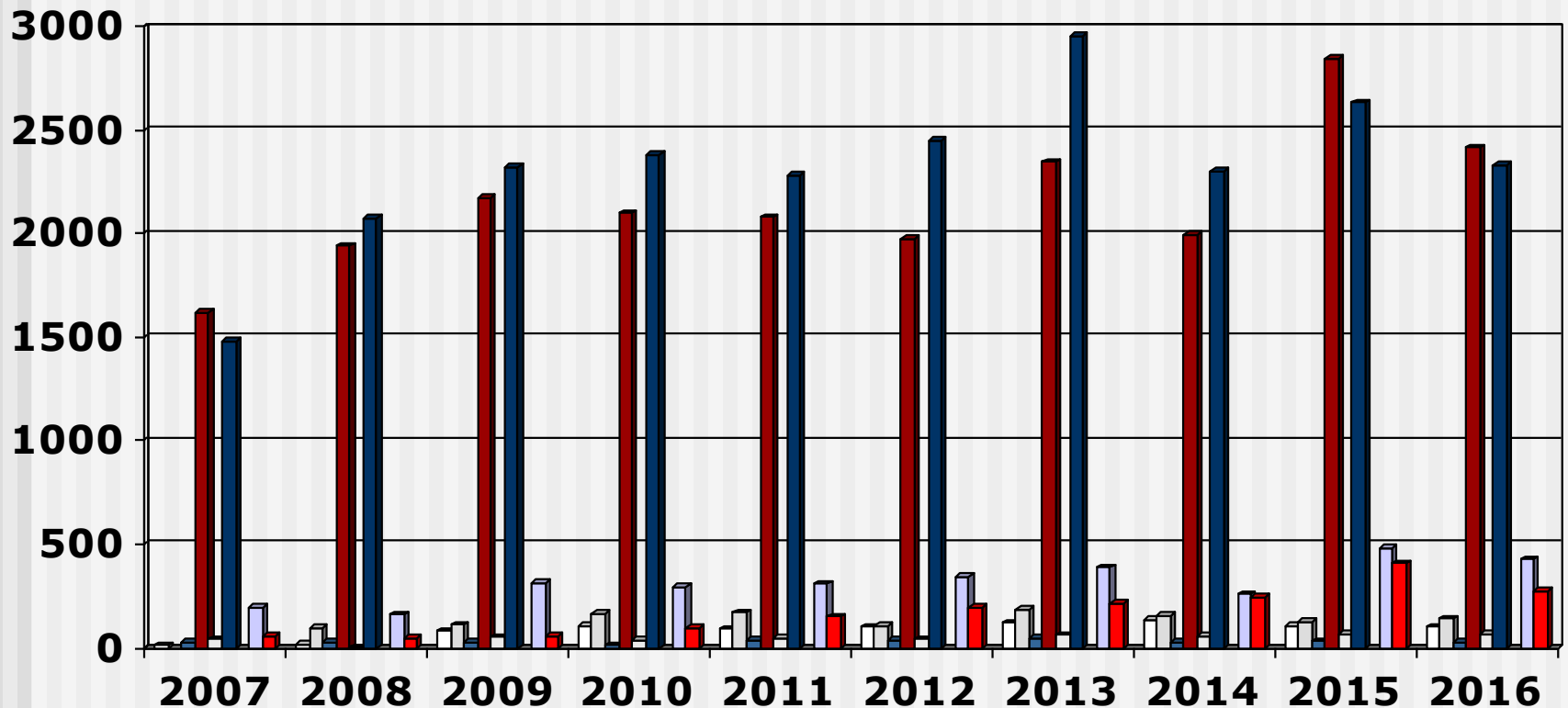
Output Pupil Nurses

(2007 - 2016) Overview

- These slides show the output of Nursing Education Institutions (Public and Private Institutions) providing the programme leading to enrolment as an Enrolled Nurse for the years 2007 - 2016
- Each slide is presented twice: first all slides are shown without data tables and then the slides are repeated with full data tables
- For further information, please contact:
 - S A Nursing Council:
Private Bag X132, Pretoria, 0001, Republic of South Africa
 - Phone: 012 420-1000
 - Fax: 012 343-5400
 - E-mail: registrar@sanc.co.za
 - Website: www.sanc.co.za

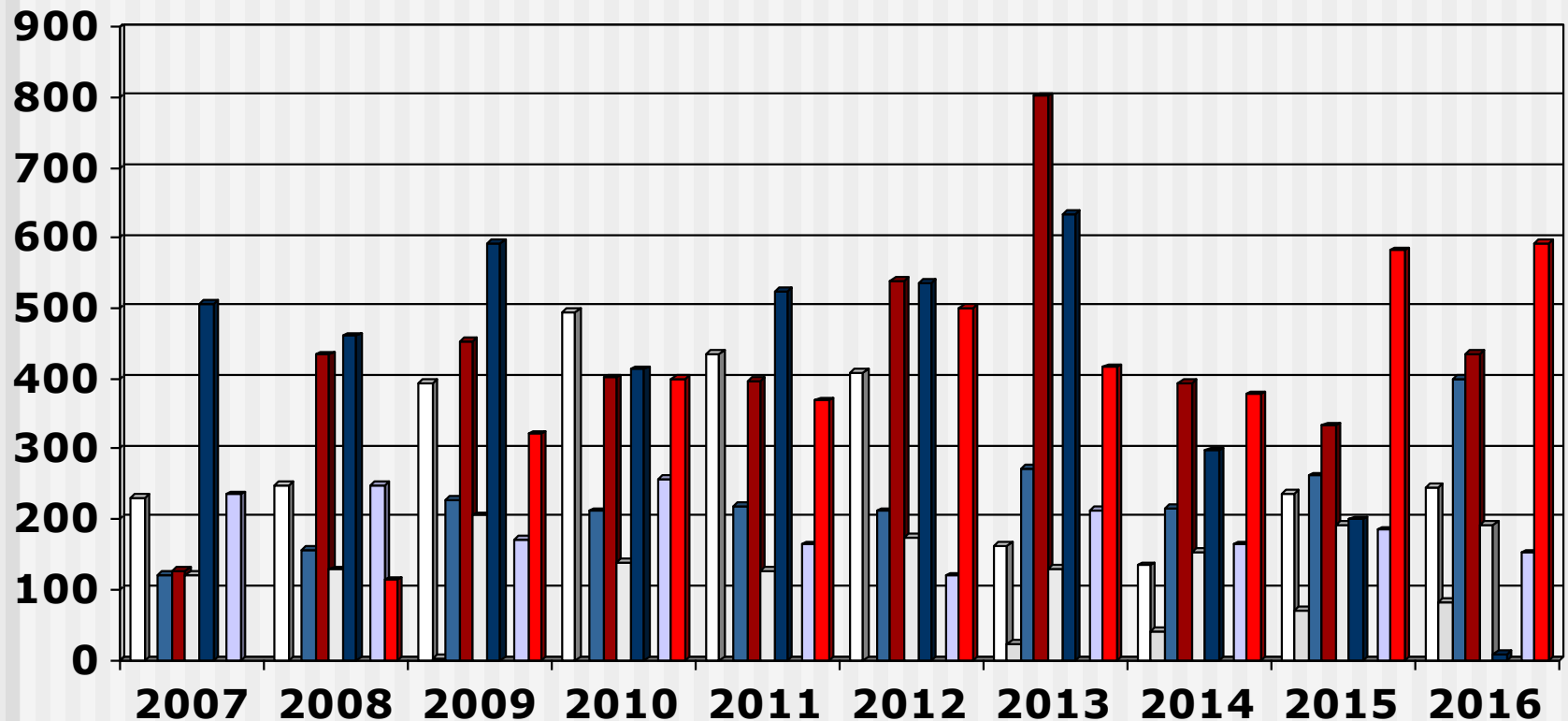
Output Pupil Nurses

(2007 - 2016) Private Institutions



Output Pupil Nurses

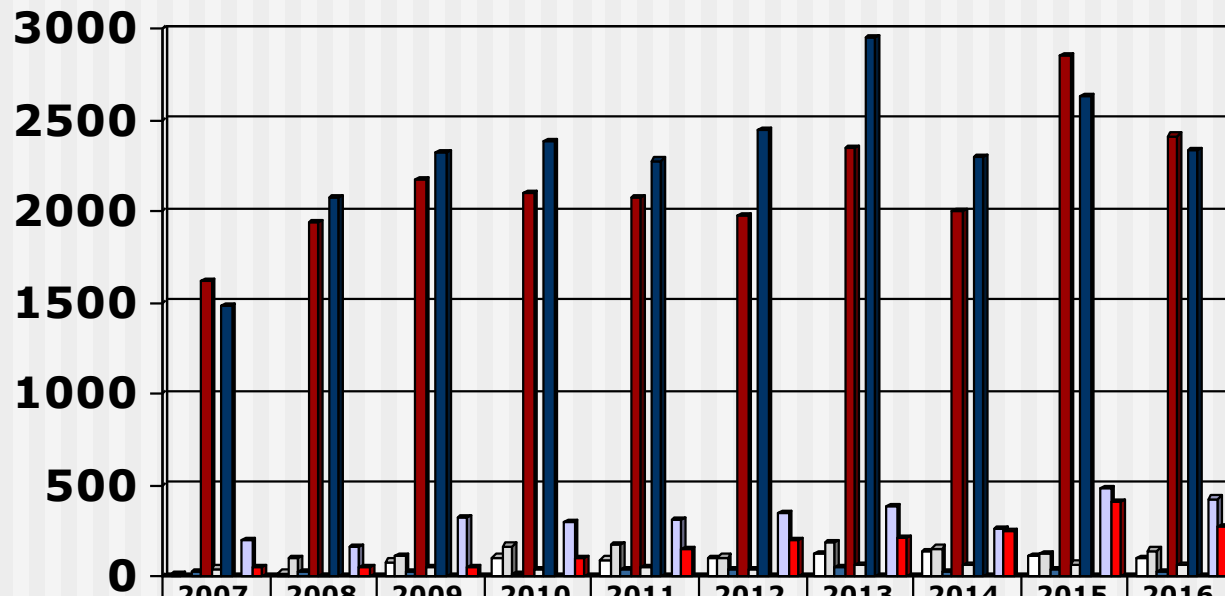
(2007 - 2016) Public Institutions



□ Limpopo □ North West ■ Mpumulanga ■ Gauteng □ Free State
■ KwaZulu Natal ■ Northern Cape □ Western Cape ■ Eastern Cape

Output Pupil Nurses

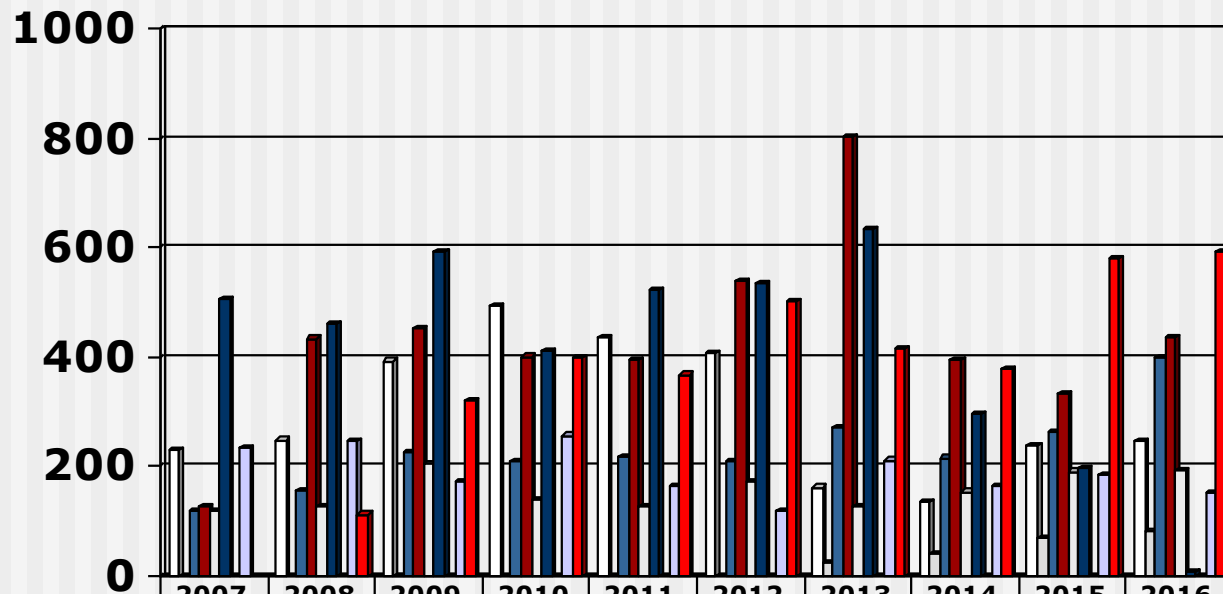
(2007 - 2016) Private Institutions



	2007	2008	2009	2010	2011	2012	2013	2014	2015	2016
□ Limpopo	10	18	80	105	92	99	120	132	108	99
□ North West		96	110	165	171	103	183	153	126	141
■ Mpumulanga	26	25	24	12	34	34	46	25	32	24
■ Gauteng	1617	1939	2171	2099	2079	1978	2345	1998	2848	2414
□ Free State	42	2	52	39	47	41	62	57	66	65
■ KwaZulu Natal	1478	2077	2322	2383	2278	2448	2951	2301	2633	2332
■ Northern Cape										
□ Western Cape	193	160	316	296	307	345	387	260	478	426
■ Eastern Cape	53	49	53	98	150	195	211	246	406	271

Output Pupil Nurses

(2007 - 2016) Public Institutions



	2007	2008	2009	2010	2011	2012	2013	2014	2015	2016
□ Limpopo	231	249	393	494	436	409	162	134	237	246
□ North West			1				23	41	71	82
■ Mpumulanga	120	156	227	211	219	211	271	216	262	399
■ Gauteng	126	434	453	401	396	540	802	394	333	435
□ Free State	120	128	205	139	126	173	129	154	191	192
■ KwaZulu Natal	507	460	593	413	524	536	634	297	199	8
■ Northern Cape										
□ Western Cape	235	248	172	257	164	119	212	164	184	152
■ Eastern Cape		113	321	399	368	501	416	377	582	593