

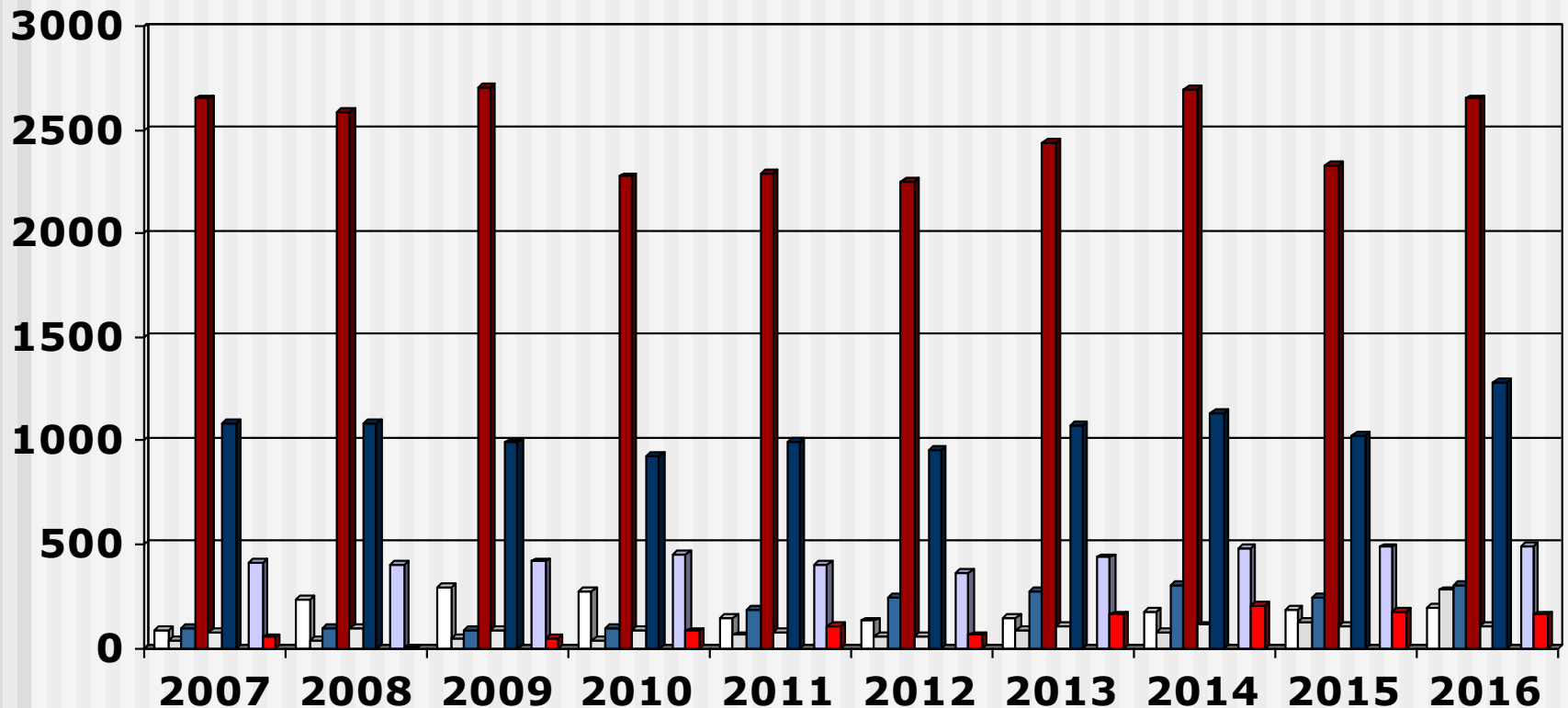
Output Pupil Auxiliaries

(2007 - 2016) Overview

- These slides show the output of Nursing Education Institutions (Public and Private Institutions) providing the programme leading to enrolment as an Enrolled Nursing Auxiliary for the years 2007 - 2016
- Each slide is presented twice: first all slides are shown without data tables and then the slides are repeated with full data tables
- For further information, please contact:
 - S A Nursing Council:
Private bag X132, Pretoria, 0001, Republic of South Africa
 - Phone: 012 420-1000
 - Fax: 012 343-5400
 - E-mail: registrar@sanc.co.za
 - Website: www.sanc.co.za

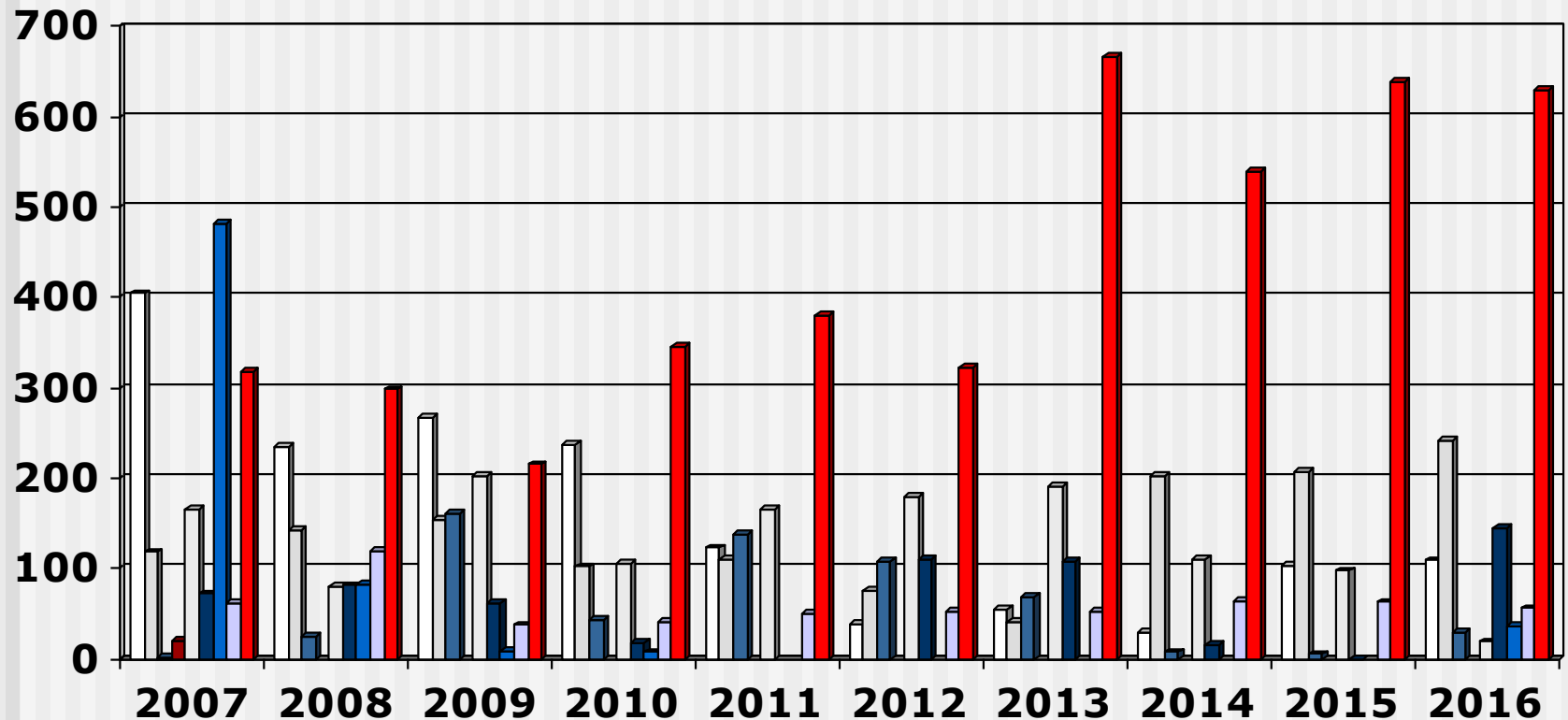
Output Pupil Auxiliaries

(2007 - 2016) Private Institutions



Output Pupil Auxiliaries

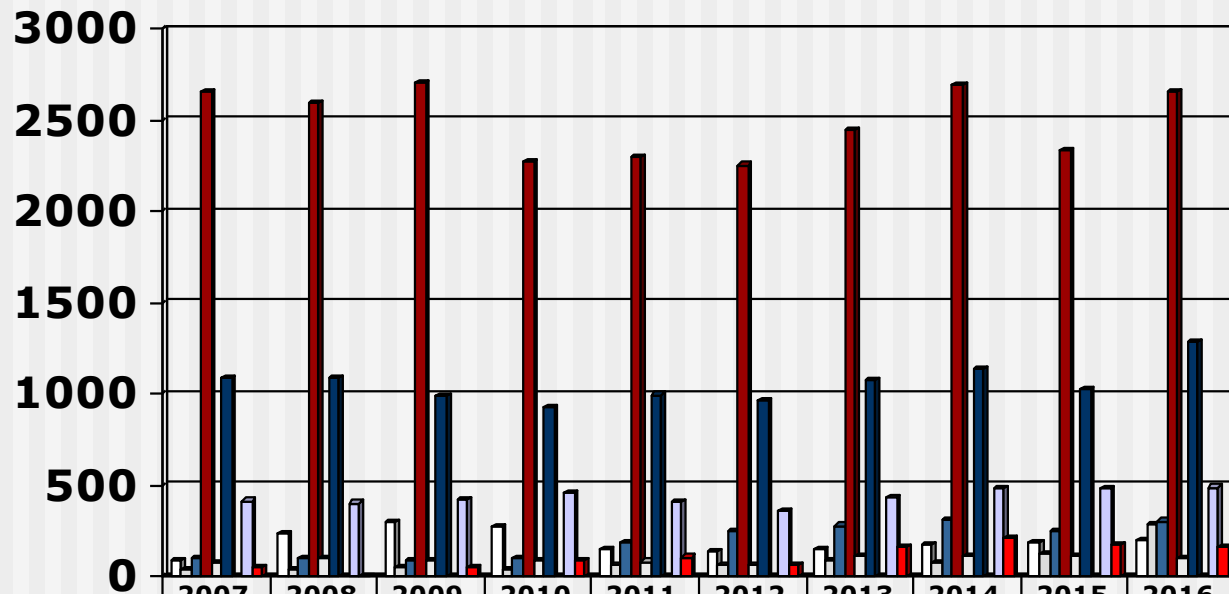
(2007 - 2016) Public Institutions



□ Limpopo □ North West ■ Mpumulanga ■ Gauteng □ Free State
■ KwaZulu Natal ■ Northern Cape □ Western Cape ■ Eastern Cape

Output Pupil Auxiliaries

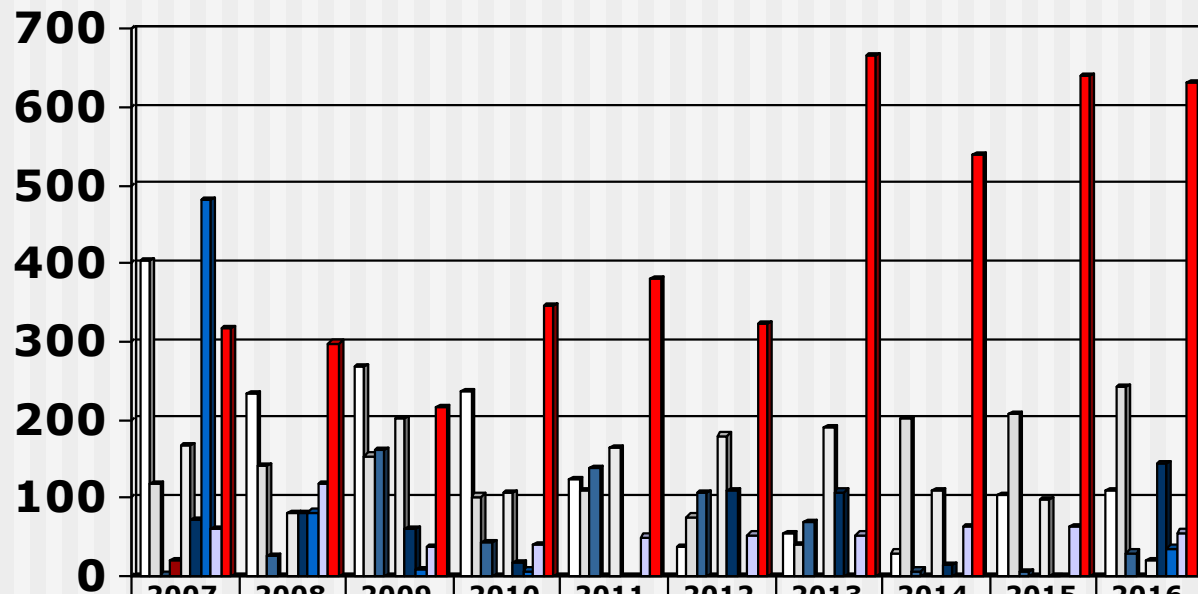
(2007 - 2016) Private Institutions



	2007	2008	2009	2010	2011	2012	2013	2014	2015	2016
□ Limpopo	85	235	294	272	146	130	147	174	184	197
□ North West	36	33	47	37	60	57	85	74	127	279
■ Mpumulanga	97	93	89	93	186	243	276	305	243	302
■ Gauteng	2652	2590	2706	2276	2293	2253	2441	2696	2332	2652
□ Free State	77	94	83	83	79	59	108	109	108	102
■ KwaZulu Natal	1086	1085	992	929	993	959	1075	1134	1027	1281
■ Northern Cape										
□ Western Cape	412	400	417	454	405	361	436	478	485	488
■ Eastern Cape	50	2	45	82	105	60	161	204	175	159

Output Pupil Auxiliaries

(2007 - 2016) Public Institutions



	2007	2008	2009	2010	2011	2012	2013	2014	2015	2016
□ Limpopo	404	234	267	237	123	38	55	30	103	109
□ North West	118	142	154	102	110	76	40	202	207	241
■ Mpumulanga	1	25	161	43	137	107	68	7	5	30
■ Gauteng	20									
□ Free State	166	80	202	106	165	180	190	110	97	19
■ KwaZulu Natal	72	81	61	18		110	108	15	0	145
■ Northern Cape	482	82	9	7						36
□ Western Cape	61	119	37	40	50	53	53	64	63	56
■ Eastern Cape	317	298	215	346	380	323	666	539	639	630